

Handcrafted Excellence



TIMBER FRAME HOMES





Craftsmanship

Just like the masters of old, true perfection comes not through machines and automation but through sweat and toil of human hands, spurred onward by a vision deep within.

At Timberhaven Log and Timber Homes, we share this same purpose and dedication, a singular vision to craft the most beautiful homes, uniquely shaped and formed for you and your lifestyle.





A scroll of parchment with a slightly aged, yellowish-brown tone and irregular, torn edges. The scroll is unrolled, showing a central rectangular area with text. The top and bottom edges of the scroll are rolled up, creating a cylindrical shape. The text is written in a classic serif font, with the title 'Precision' in a larger, more decorative script. The background is a plain, light gray.

Precision

A well-oiled machine would be nothing if not for the exacting specifications to which it is built.

Likewise, our timber frame homes require unprecedented detail to ensure a perfect fit during construction. No amount of planning and design can take the place of dedication in the workshop, shaping your home into a piece of architectural beauty.





A scroll of aged parchment with a slightly torn, irregular edge. The parchment is a warm, yellowish-brown color. It is rolled up at the top and bottom, with the top roll being slightly more visible. The text is centered on the scroll.

Skill

Our specialized tradesmen have honed their skills over decades in the log home industry. This is not their first home, and it will not be their last.

There is no substitute for experience, no replacement for expertise.

As a potter molding a fine vase, these deliberate hands shape your home as only someone with a lifetime of knowledge and dedication can do.





A scroll of parchment with a light beige, aged appearance and slightly irregular, torn edges. The scroll is unrolled, showing a central rectangular area with text. The top and bottom edges of the scroll are rolled up, creating a cylindrical shape. The text is centered and written in a dark, serif font. The background is a plain, light gray.

Meticulous *Construction*

A timber frame home is not
built off-site or nailed together
on a factory line. A timber
frame home is constructed
deliberately through
painstaking attention to detail.

Not held together with nails,
bolts, and screws, the timber
frame home is an engineering
marvel and a lesson in genuine
wooden beauty.

Carelessness is not an option.





A scroll with text on a parchment-like background. The scroll is unrolled, showing a central area with text. The edges of the scroll are rolled up, and the paper has a textured, aged appearance with some staining and irregular edges.

Innovative *Design*

Complacency is the enemy
of innovation, and no room
is allowed for it in our timber
frame homes.

At Timberhaven Log & Timber
Homes, we continually strive to
develop and engineer beautiful,
yet functional, homes.

Your home is the center point
of your life. Live it. Enjoy it.
Experience a functional home
as beautiful as the memories
you make inside it.



THE LEGACY

Total: 3,754 sq. ft. / Bedrooms: 4 / Bathrooms: 2.5

With a touch of elegance, the Legacy model delivers a spacious feel without sacrificing functionality and convenience.





THE HERITAGE

Total: 2,884 sq. ft. / Bedrooms: 3 / Bathrooms: 3

Incorporating elements of old world charm, the Heritage model boasts a clean, open floor plan design while retaining a cozy feel.

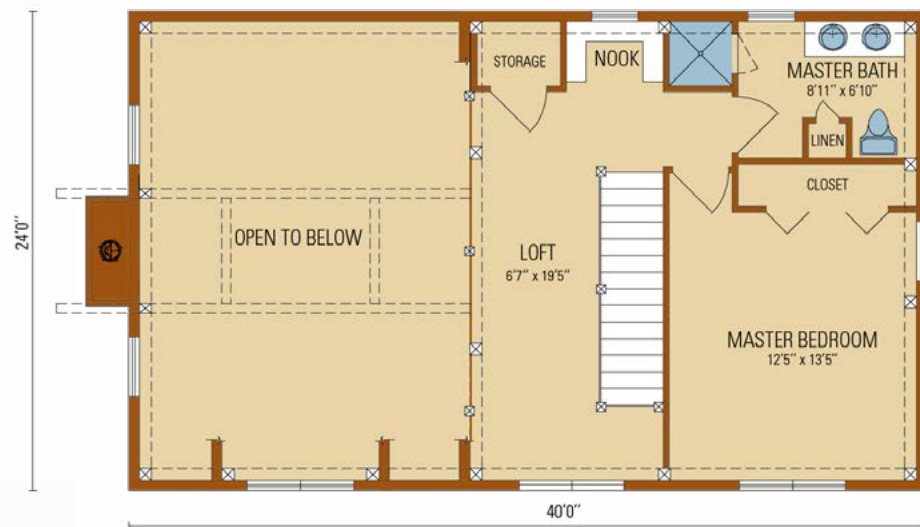
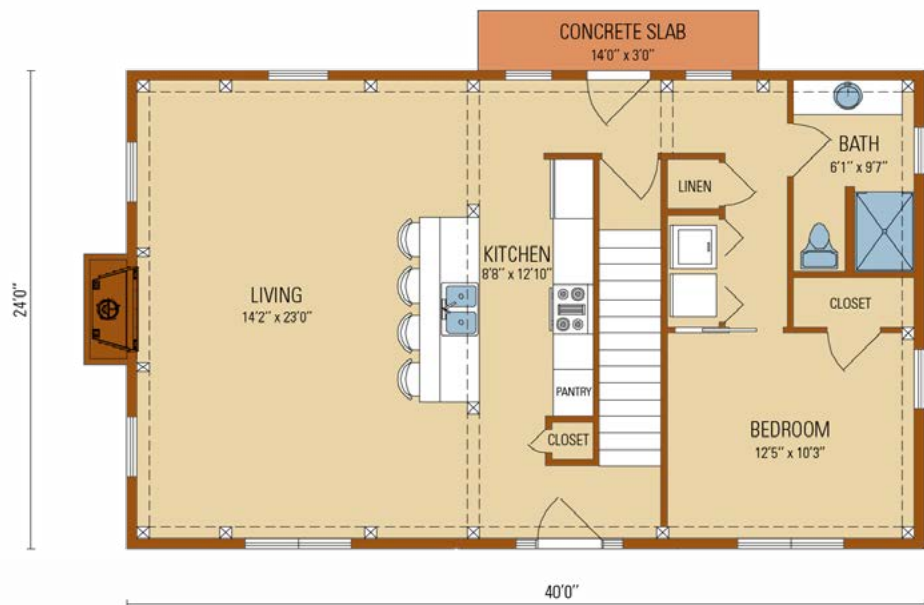




THE CRAFTSMAN

Total: 1,473 sq. ft. / Bedrooms: 2 / Bathrooms: 2

Cozy with a bit of rugged charm, the Craftsman is perfect as a getaway retreat or for those looking to reduce their footprint.



A scroll with a light brown, textured surface, partially unrolled. The top and bottom edges are rolled up. The text is centered on the unrolled portion.

Immeasurable *Beauty*

A timber frame home is unlike
any other – it is a work of
precision beauty with influences
of old-world craftsmanship,
customizable for modern living.

Each wooden component of
these architectural masterpieces
is skillfully handcrafted to
specification, making each
home unique from any other.











Why **TIMBERHAVEN?**

QUALITY

Our timber frame homes are crafted using Premium Engineered Timbers or traditional solid logs and name-brand package components.

COMPLETENESS

Timberhaven offers the most complete timber frame packages available on the market today.

FLEXIBILITY

From design services to package components, your Timberhaven timber frame home materials package is completely customizable to meet your specific needs.

EXPERIENCE

With an average of 25 years of industry experience per employee, expert hands-on support is only a phone call away.

PRECISION PRE-CUT FRAME

Each Timberhaven timber frame home is precision-cut to ensure all components fit together properly and eliminate the need for customization on the job site.

CONSTRUCTION SERVICES

Timberhaven offers onsite technical consultant services to assist your builder in expertly erecting your timber frame. For full timber frame erection services, contact your representative for details.

STANDARD TIMBER FRAME

Materials Package



Timber Frame Package

*Kiln-dried, precut, traditional or engineered timbers
(Eastern White Pine)*

Structural (Bent) Timber Frame System

- 6x12/8x12 timber frame
- 6x8/8x8 corner, dormer and support posts
- 6x8/8x8/6x12 loft support joists
- 6x12/8x12 loft support beams
- Glu-lam loft support beams (as required)
- 6x8/8x8/6x12 loft ties
- 6x8/6x12/8x8/8x12 rafters
- 6x8/6x12 timber trusses/purlins
- 6x8/6x12 collar ties
- 6x12/8x12 ridge beam
- Glu-lam ridge beams (as required)
- 4x12/6x12 rafters/valleys
- 6x8/6x12 chimney/skylight framing members

Timber Frame Exterior Porch/Deck/Balcony

- 6x8/8x8/6x12 porch headers
- 4x8/6x8/8x8 porch rafters
- 6x6/6x8/6x12 angle braces

Fasteners

- 1"x8" or 1"x10" round oak pegs
- 10" or 12" lag bolts
- 10" or 12" timber screws
- Steel gusset, plates, bolts, nuts, washers (post & beam)

Click here to
Find Your Representative

NOTE: Alternative package materials also available.
See your representative for complete details.

Weather-Tight Package

All First-Floor System Materials

- PT 2x sill plate and sill seal
- (2) 2x10 perimeter band / 2x10 floor joists
- (4) 2x12 girder beams
- PT 6x6 girder support posts
- Metal joist hangers / bridging
- Construction adhesive
- ¾" T&G Advantech subfloor sheathing

Interior Wall Framing Material

- 2x load-bearing partition framing

All Exterior Wall Materials

- 2x6 exterior framed walls (2x4 or 2x6 framing for garages)
- 7/16" wall sheathing with vapor barrier
- JamesHardie sidings / trim / soffit / fascia

Exterior Windows & Doors

- Name brand windows and exterior doors with grilles, screens, hardware
- Name brand exterior doors and hardware

Timber Frame Roof Materials

- 1" T&G pine ceiling paneling, 15 lb. felt paper below rigid insulation of timber rafter/truss roof system
- (2) layers R-40 rigid insulation

Conventional Roof Framing Materials

- Pre-manufactured roof and gable-end trusses
- 2x12 rafters
- 2x ladder rake
- 7/16" roof sheathing with H-clips
- Synthetic roofing underlayment
- Ice and water shield
- 30-year Architectural shingles
- Drip edge, flashing
- Ridge vent, strip vent

Porch Materials (conventional)

- Kiln-dried pine or PT 6x6 posts
- Kiln-dried pine or PT 6x6 post braces
- PT 2x floor joists, headers
- Metal joist hangers
- 2x rafters, 2x ceiling joists

Finish Materials Package

Interior Finish Materials

- 2x non-load-bearing partition framing
- R-21 fiberglass insulation for exterior framed walls
- Solid-wood, raised-panel pine interior doors with hardware
- 1x interior pine trim for windows, exterior doors and interior doors
- 1 ¾"x interior pine window sills
- 1x pine baseboard

Loft System

Loft/Stair Rail Materials:

- Kiln-dried pine 6x6 engineered or traditional posts
- 2x4 pine railing / 2x2 balusters

Loft/Stair systems:

- Finish: 2x12 stringers, 2x pine treads, 1x pine risers
- Exposed: 4x12 pine stringers, 4x pine treads

Loft Floor

Composition floor:

- 1" T&G pine subfloor (first layer)
- ¾" T&G subfloor (second layer)

Conventional Roof Systems as Applicable

- 1" T&G pine interior ceiling
- Insulation baffle board, plastic vapor barrier
- R-38 unfaced fiberglass insulation for 2x rafter roof, pre-manufactured truss roof systems

Exterior Deck/Balcony Materials

- Kiln-dried pine or PT 6x6 posts
- Kiln-dried pine or PT 2x4 railings / 2x2 balusters
- PT 5/4 flooring
- PT 2x floor joists, headers
- Metal joist hangers

Exterior Porch Materials

- 1" T&G pine ceiling paneling
- PT 5/4 flooring
- Kiln-dried pine or PT 2x4 railings / 2x2 balusters

Exterior preservative, stain, insecticide (as applicable)

Make your dream home a reality!

Call today! 855-306-5678



TimberhavenLogHomes.com

1081 Salem Church Road, Middleburg, PA 17842